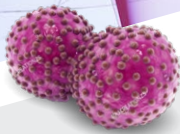




# Lung Cancer Mutation Profiling



## Minimize Sample Rejection in Lung Cancer Testing

Mutation profiling of non-small cell lung cancer samples can be challenging due to limited quantity & poor quality of the specimens. Several technologies, including next generation sequencing, require specimens with high tumor content and generally reject as many as 20% of the samples due to low tumor fraction and DNA yield.<sup>1,2</sup>

### AGENA'S SOLUTION

#### ➤ **UltraSEEK™ Lung Panel**

Enables study of disease progression and resistance from CTCs and ctDNA, detecting 67 variants from a single blood draw at as low as 0.1% minor allele frequency (MAF). Optimized for low and poor quality DNA, reducing sample rejection and workflow failure rate.

#### ➤ **iPLEX® HS Lung Panel**

Facilitates variant detection as low as 1% MAF from poor quality and degraded samples such as FFPE tissue, fine needle aspirates, core needle biopsies, smears, pleural fluid and cytology blocks.

For Research Use Only.  
Not for use in diagnostic procedures.

## Genes & Mutations for Lung Panels

Pre-designed panels for with content compliant with the NCCN guidelines across 5 genes for comprehensive profiling of lung cancer.

Gene	Coverage*	# of Variants*	
		UltraSEEK Lung Panel	iPLEX HS Lung Panel
BRAF	Codons 469 (exon 11), 594, 600 (exon 15)	4	4
EGFR	Exon 19 indels, exon 20 insertions and substitutions across exons 18, 19, 20 and 21	43	46
ERBB2	Exon 20 insertions	2	2
KRAS	Codons 12, 13 (exon 2) and 61 (exon 3)	14	14
PIK3CA	Codons 542, 545 (exon 9) and 1047 (exon 20)	4	4
<b>Total Variants</b>		<b>67</b>	<b>70</b>

\* Complete variant list available upon request

## ASSAY WORKFLOW

DNA to data in as little as 8 hours, with minimal manual processing time enables greater lab efficiency. Simplified reporting with automated software generates clear results.

## ORDERING INFORMATION

Catalog No.	Item	Sample Type	# Samples	Chip Format
13136F	Complete UltraSEEK Lung Panel Set	Plasma	32	96
13138F	Complete UltraSEEK Lung Panel Set	Plasma	80	96
13140	Complete UltraSEEK Lung Panel Set	Plasma	32	384
13141	Complete UltraSEEK Lung Panel Set	Plasma	80	384
13124F	Complete iPLEX HS Lung Panel Set	Tissue	48	96
13126F	Complete iPLEX HS Lung Panel Set	Tissue	120	96
13128	Complete iPLEX HS Lung Panel Set	Tissue	48	384
13129	Complete iPLEX HS Lung Panel Set	Tissue	120	384

The panel sets contain assay specific primers and all the required reagents to process DNA samples on the MassARRAY system.

## References

1. R. Avula et al. Assessment of UltraSEEK Colon Cancer Panel for Detection of Low Frequency Somatic Mutations in Blood. Poster session presented at: Association of Molecular Pathology Annual Meeting; 2017 Nov 16-18; Salt Lake City, UT.
2. R.T. Birse, D. Irwin. Reliable Detection of Low Abundance Somatic Mutations of EGFR, KRAS, BRAF, NRAS and PIK3CA in Metastatic Colorectal Adenocarcinomas Using iPLEX HS, a New Highly Sensitive Assay for MassARRAY. Poster session presented at Association of Molecular Pathology Annual Meeting; 2016 Nov 10-12; Charlotte, NC.

For Research Use Only. Not for use in diagnostic procedures.

Agena Bioscience, Inc.  
4755 Eastgate Mall  
San Diego, CA 92121  
Phone: +1.858.882.2800

Order Desk: +1.858.202.9301  
Order Desk Fax: +1.858.202.9220  
orderdesk@agenabio.com  
Web: agenabio.com

**US** +1.877.4.GENOME  
**EU** +49.40.899676.0  
**AP** +61.7.3088.1600  
**CN** +86.21.6427.0566

